

LaneLED WALL und INOX42 – railway station Sembrancher

Increased safety in a sophisticated design

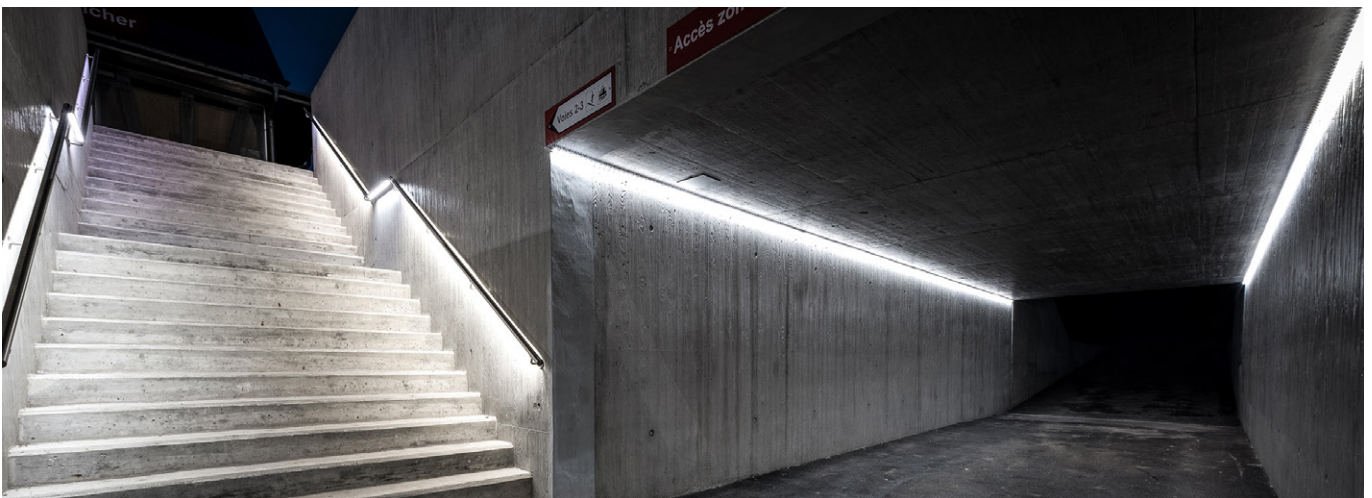
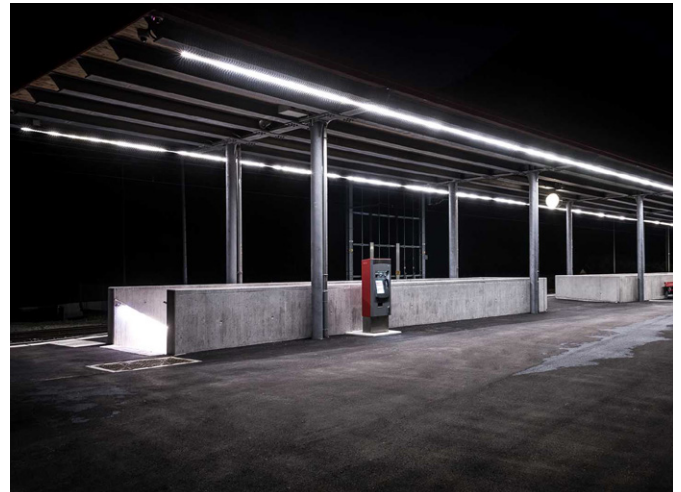
Customer/installation engineer:	TMR Martigny
Requirement:	Railway station lighting
Solution:	LaneLED WALL and LaneLED INOX42
Quantity:	250 m
Areas of application:	Underpasses and overpasses in railway stations, escape route and emergency staircases, decorative applications in office or exhibition wings, hospitals and nursing homes, schools and day care centres, private and public pathways, staircases

Initial situation

The railway station was completely rebuilt, and LED technology was intended for its lighting. The goal was to find a modern, energy-efficient solution for lighting the entire grounds of the railway station. GIFAS was able to satisfy all requirements with its LaneLED WALL and LaneLED INOX42. The railway premises have now been provided with optimal lighting in a way that is also very appealing.

Customer benefits

- beautiful, modern design
- energy-efficient
- state-of-the-art technology
- simple installation
- meets current standards
- a partner for planning and delivery with GIFAS



V 0817